



# Cripto Monoclonal Antibody

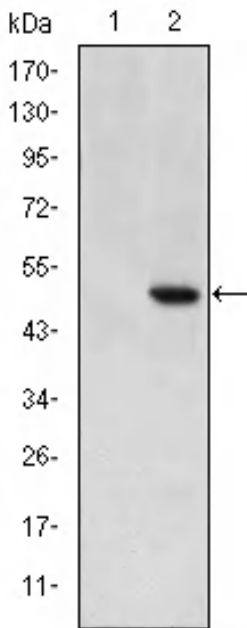
<b>Catalog No</b>	YP-Ab-15827
<b>Isotype</b>	IgG
<b>Reactivity</b>	Human
<b>Applications</b>	WB;ELISA
<b>Gene Name</b>	TDGF1
<b>Protein Name</b>	Teratocarcinoma-derived growth factor 1
<b>Immunogen</b>	Purified recombinant fragment of human Cripto expressed in E. Coli.
<b>Specificity</b>	Cripto Monoclonal Antibody detects endogenous levels of Cripto protein.
<b>Formulation</b>	Ascitic fluid containing 0.03% sodium azide,0.5% BSA, 50%glycerol.
<b>Source</b>	Monoclonal, Mouse
<b>Purification</b>	Affinity purification
<b>Dilution</b>	Western Blot: 1/500 - 1/2000. ELISA: 1/10000. Not yet tested in other applications.
<b>Concentration</b>	1 mg/ml
<b>Purity</b>	≥90%
<b>Storage Stability</b>	-20°C/1 year
<b>Synonyms</b>	TDGF1; CRIPTO; Teratocarcinoma-derived growth factor 1; Cripto-1 growth factor; CRGF; Epidermal growth factor-like cripto protein CR1
<b>Observed Band</b>	
<b>Cell Pathway</b>	Cell membrane ; Lipid-anchor, GPI-anchor . Secreted . Released from the cell membrane by GPI cleavage. .
<b>Tissue Specificity</b>	Preferentially expressed in gastric and colorectal carcinomas than in their normal counterparts. Expressed in breast and lung.
<b>Function</b>	function:Could play a role in the determination of the epiblastic cells that subsequently give rise to the mesoderm.,similarity:Contains 1 EGF-like domain.,tissue specificity:Preferentially expressed in gastric and colorectal carcinomas than in their normal counterparts.,
<b>Background</b>	This gene encodes an epidermal growth factor-related protein that contains a cripto, FRL-1, and cryptic domain. The encoded protein is an extracellular, membrane-bound signaling protein that plays an essential role in embryonic development and tumor growth. Mutations in this gene are associated with forebrain defects. Pseudogenes of this gene are found on chromosomes 2, 3, 6, 8, 19 and X. Alternate splicing results in multiple transcript variants. [provided by RefSeq, Mar 2010],
<b>matters needing attention</b>	Avoid repeated freezing and thawing!



**Usage suggestions**

This product can be used in immunological reaction related experiments. For more information, please consult technical personnel.

**Products Images**



Western Blot analysis using Cripto Monoclonal Antibody against HEK293 (1) and TDGF1-hlgGfc transfected HEK293 (2) cell lysate.

